



Hackney Road, London, E2

BUTLER  STAG



Top floor one bedroom conversion apartment set within a lovely four-storey Georgian terraced residence, just moments from Columbia Road and Haggerston Park.



- One Bedroom Apartment
- Top Floor of a Georgian Conversion
- Newly Redecorated
- Bright Reception/Diner
- Next to Haggerston Park
- Moments from Columbia Road
- Part Furnished
- Available from 16th August 2025

Newly redecorated, this third floor property comprises of a welcoming entrance hallway, a bright and spacious reception which is semi open-plan to the kitchen, a large bedroom and a bathroom.

Set back from Hackney Road, the location is very convenient for a range of social hotspots and attractions, including Columbia Road and Broadway Market. The popular nightlife, bars and restaurants of Shoreditch and Hoxton are also just moments away.

There are numerous transport links nearby with Hoxton station the closest and bus routes into the City and West End from Hackney Road itself.

Perfectly suited to a single professional or couple, the property is offered part furnished and is available immediately.

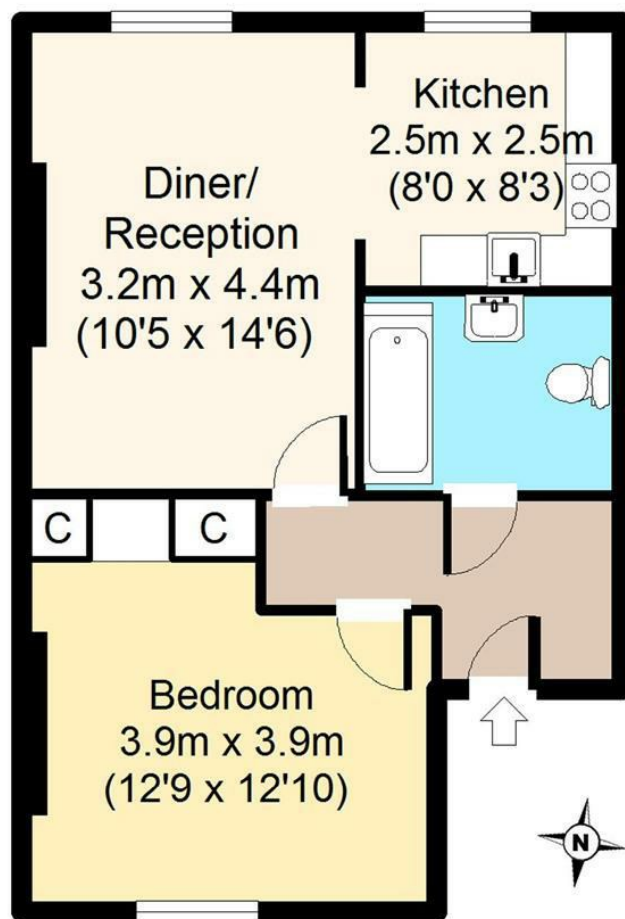
EPC Rating D
Council Tax Band C





Third Floor

Approx. 44 sq. meters (475 sq. feet)



Total area: approx. 44 sq. meters (475 sq. feet)

For illustration purposes only - not to scale

IMPORTANT NOTICE - These particulars have been prepared in good faith and they are not intended to constitute part of an offer or contract. We have not performed a structural survey on this property and the services, appliances and specific fittings have not been tested. All photographs, measurements, floor plans and distances referred to are given as a guide and should not be relied upon.

BUTLER & STAG

☎ 020 8102 1236

🏠 508 Roman Road, Bow, London, E3 5LU

✉ bow@butlerandstag.com

www.butlerandstag.uk